

U-Poster 1.0 user manual

1. Setup power on/off

Check "Auto start" = ON

Select Start Time & End Time

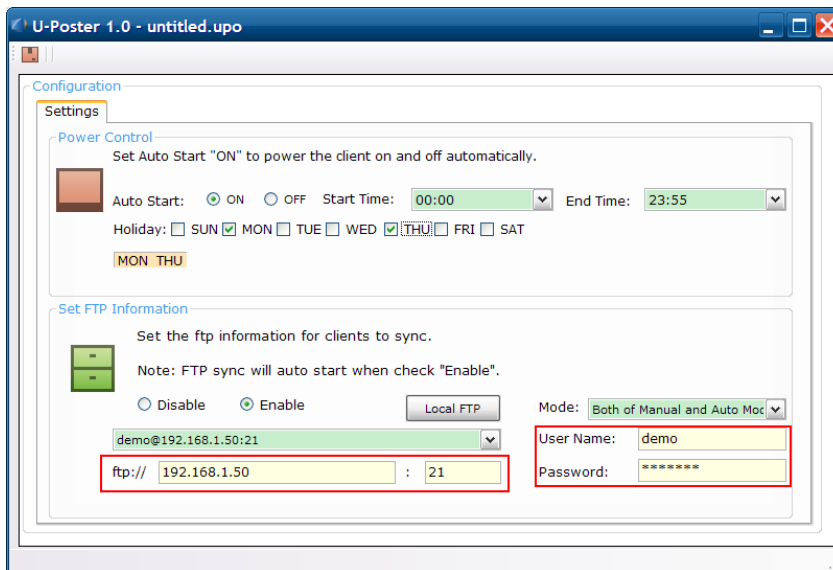
Check Holiday (non working day)

2. Set FTP info

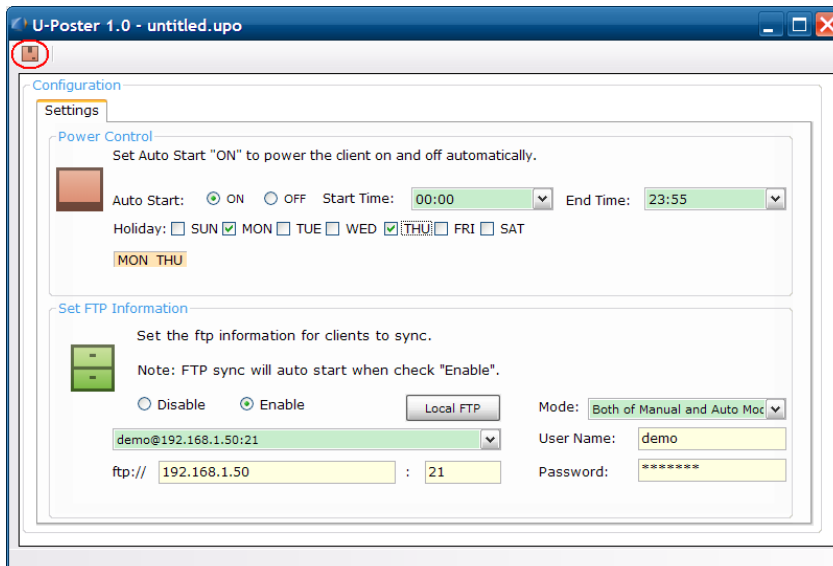
Check "Enable"

Select Mode

Fill the information



3. Export to SD



Q&A:

1. What time does auto_ftp_mode work?
Auto_ftp_mode works only @ End time.
2. How to update the content?
 - a.) delete all files @ FTP folder.
 - b.) copy new files into FTP folder.