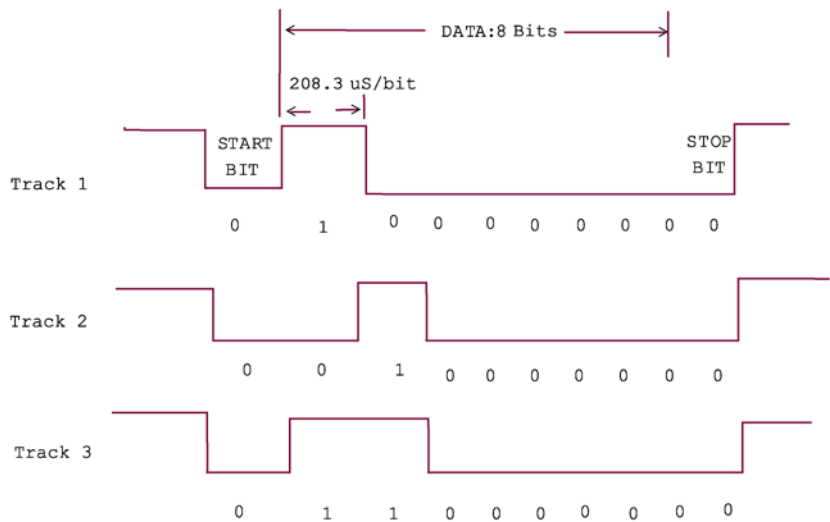


DV-66K, Keypad Controller

Operating Voltage	3 - 5.5V
Operating Temperature	32 - 140°F (0 - 60°C)
Serial Port Specs	Baud rate 4800 bits/sec, Null check, 8 bits, 1 stop bit
Dimensions	2.06"(L) x 2.56"(W) x 0.62"(H)

Note: Space bit always set zero (Space bit = 0).

Data Timing Chart:

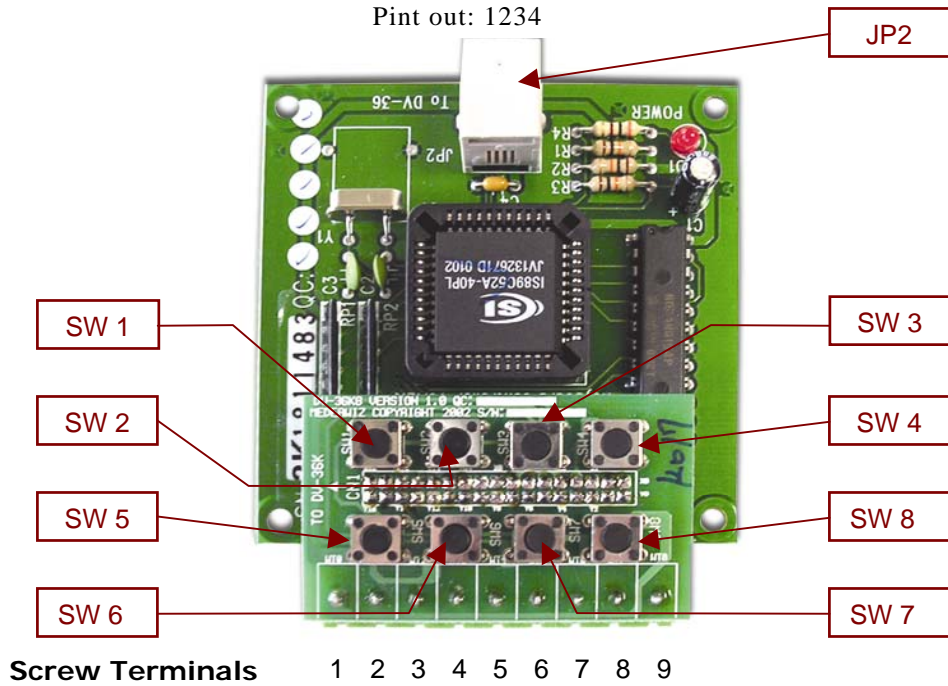


1. Connect ribbon cable from JP1 on the DV-66K to key switches (DV-66K can support up to 99 tracks by using a ribbon cable.)
2. Connect 4P4C cable between DV-66K (JP2) and DV-66B
3. Follow the matrix table below to select your tracks

DV-66K Keypad Controller Matrix Table

	X0	X1	X2	X3	X4	X5	X6	X7	X8	X9	X10	X11	X12	X13	X14	X15
Y0	T1	T2	T3	T4	T5	T6	T7	T8	T9	T10	T11	T12	T13	T14	T15	T16
Y1	T17	T18	T19	T20	T21	T22	T23	T24	T25	T26	T27	T28	T29	T30	T31	T32
Y2	T33	T34	T35	T36	T37	T38	T39	T40	T41	T42	T43	T44	T45	T46	T47	T48
Y3	T49	T50	T51	T52	T53	T54	T55	T56	T57	T58	T59	T60	T61	T62	T63	T64
Y4	T65	T66	T67	T68	T69	T70	T71	T72	T73	T74	T75	T76	T77	T78	T79	T80
Y5	T81	T82	T83	T84	T85	T86	T87	T88	T89	T90	T91	T92	T93	T94	T95	T96
Y6	T97	T98	T99													

Pin	JP	Cable	Function
1	JP2	DV-66K	Ground
2	JP2	DV-66K	TX
3	JP2	DV-66K	RX
4	JP2	DV-66K	+5 VDC



Pin	Description
Pin 1	Common
Pin 2	Switch 1, Track #1
Pin 3	Switch 2, Track #2
Pin 4	Switch 3, Track #3
Pin 5	Switch 4, Track #4
Pin 6	Switch 5, Track #5
Pin 7	Switch 6, Track #6
Pin 8	Switch 7, Track #7
Pin 9	Switch 8, Track #8

NOTE for DV-68K terminal 0 is common.
Terminals 1 to 8 are for buttons 1 to 8.